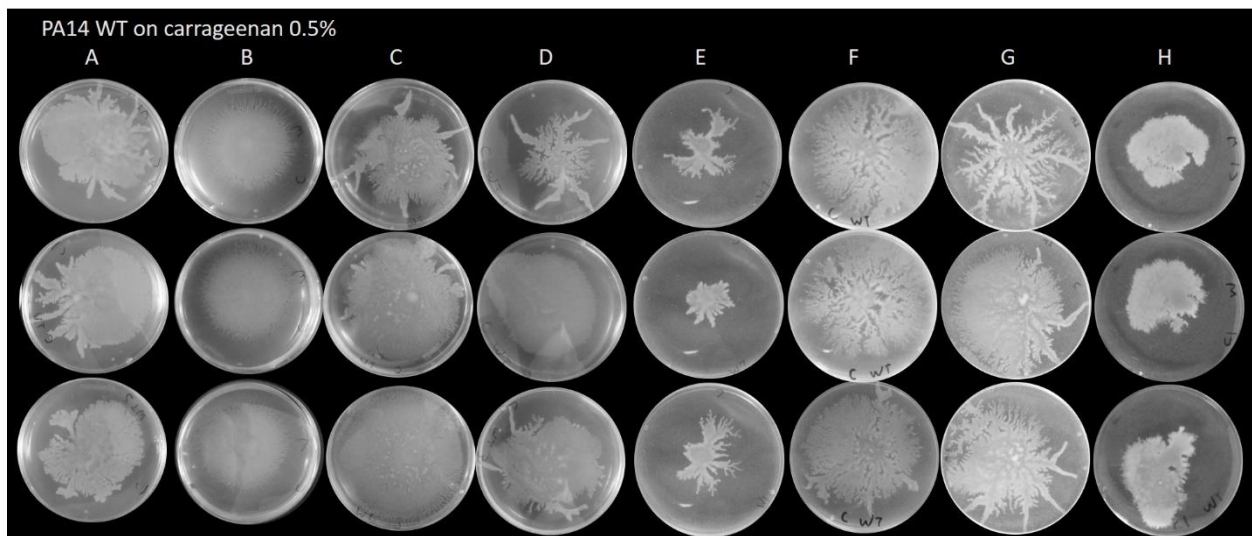


**Figure S1.** Gelling agent percentage allowing for surface spreading of *P. aeruginosa* PA14 WT. Concentration of 0.5% allows motility for agar and carrageenan, but not 0.7%. Concentration of 0.1% allows motility of PA14 WT for gellan gum, but not 0.3%



**Figure S2.** Swarming phenotype of PA14 WT on carrageenan 0.5%. Each letter presents the triplicate of PA14 WT from an independent assay.